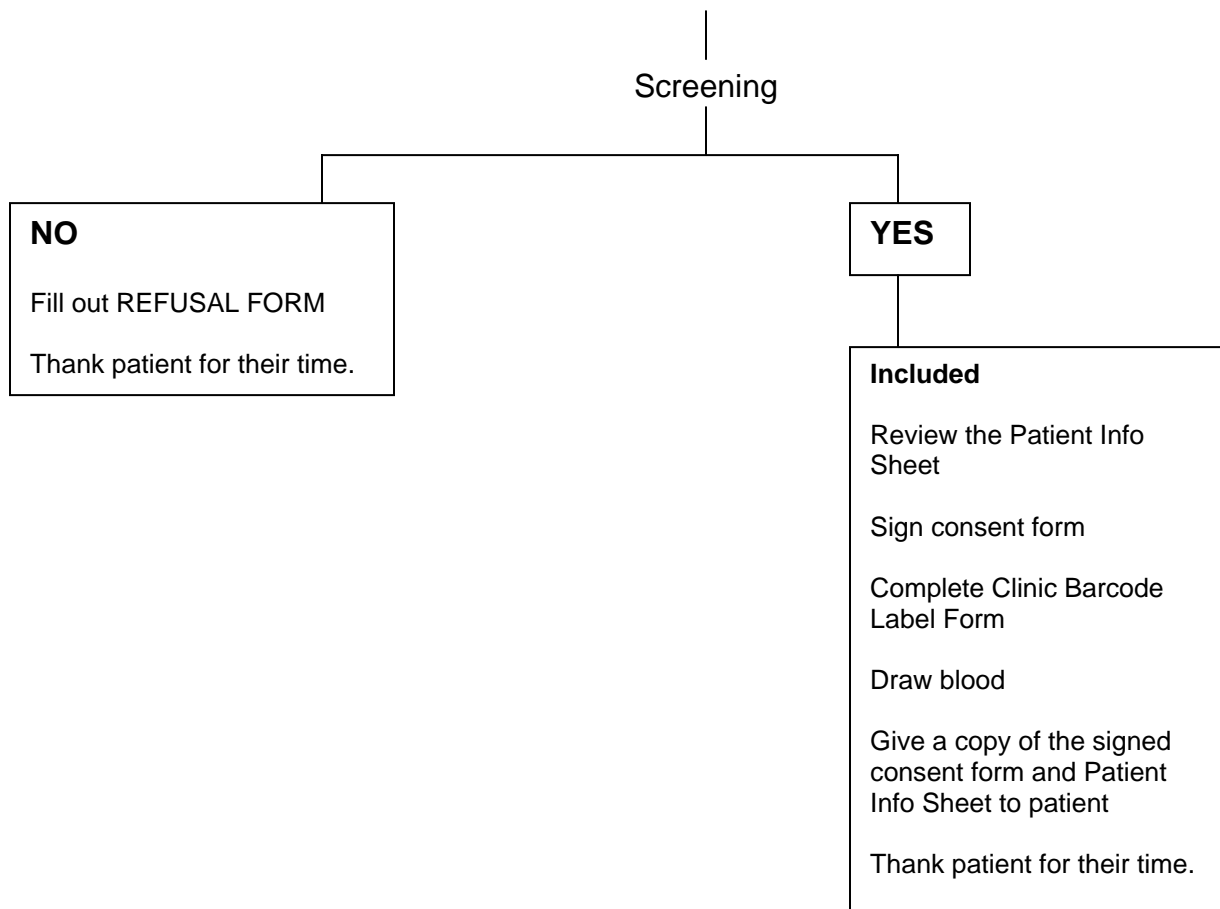




- Data Collection Overview -

At the time of the patient's annual visit, the clinic will ask the person if he/she wishes to participate in this study. Once the person agrees and meets all inclusion criteria then the study may proceed. All documents must be filled out in the following order:

AT THE ANNUAL CLINIC



Data from the annual assessment must now be entered into the CHARMS database. We ask that the clinic enter this data into the computer within four (4) weeks of each individual assessment visit. Failure to do so may result in poor data being entered and stored. This may in turn lead to more errors and cause problems at the Central Lab. If a clinic has trouble with entering data, please call T. Soll immediately so he may assist you as soon as possible.

WE NEED THE PATIENT DATABASE COMPLETED AND VERIFIED BEFORE ANY LAB RESULTS ARE ENTERED INTO THIS DATABASE.